



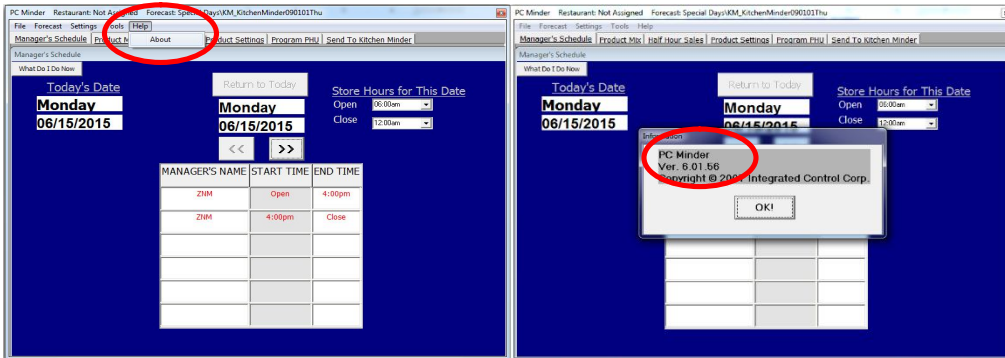
NEW Prince Castle 2nd Generation PHU with Temperature pass-thru feature from PCminder/Kitchen Minder v6.0



Requirements:

1- PCMinder AND Kitchen Minder requires v6.01 software

PCMinder - Check the software on your PCMinder by clicking Help, About



The version must be v6.01.55 or higher to function with the Prince Castle Gen2 PHU's. If your version is not v6.01.55 or higher, please go the section on Page 2 labeled:

Upgrading PCMinder and Kitchen Minder to 6.01+

Kitchen Minder - The KM1 and KM2 software must be on v6.01 or higher to function with the Prince Castle Gen2 PHU's. If your version is not v6.01 or higher, please go the section on Page 2 labeled:

Upgrading to PCMinder and Kitchen Minder to 6.01+

2- New PHU's require New Prince Castle Translator II Kits – Kit Part# 990198

Order kits directly from ICC by calling +1-631-673-5100 or email: support@goicc.com

Each kit costs \$219, all necessary cables are included. To determine how many kits are required for your PHU configuration and instructions on installing/configuring your New Gen2 PHU's, go to the section labeled:

Connecting and configuring Prince Castle Translator II Kits to the Kitchen Minder

Upgrading to PC Minder and Kitchen Minder to 6.01+

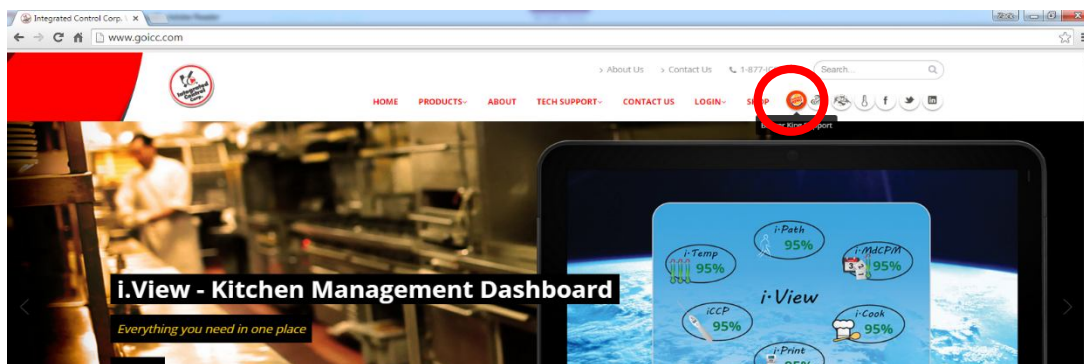
Version 6.0 requires a valid software license and is **Included** with Kitchen Minder Systems shipped on or after March 20, 2014. Regardless of the ship date, all KM2 color units have an included license.

Kitchen Minder1 (KM1) Systems shipped prior to March 20, 2014 require a **Paid Upgrade License** upgrade.

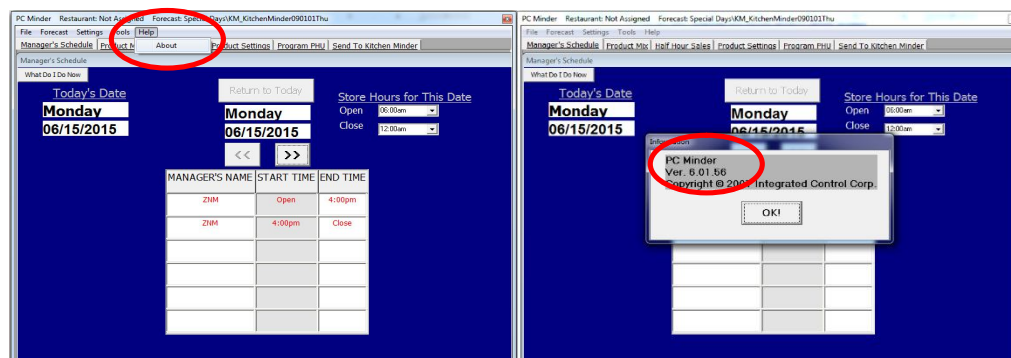
To purchase the **Paid Upgrade license**, pay on-line at the following Kitchen Technology Innovations link : <http://shop.onkti.com/>

To upgrade your system:

1. On the back-of-house (BOH) computer, go to www.goicc.com
2. Click on the Burger King icon toward the top right of the screen



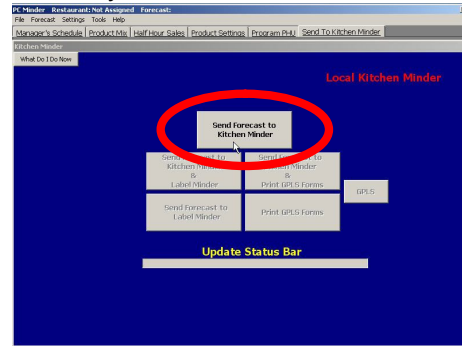
3. Select your country by clicking on the correct flag
4. Find and select [Download v6.0 Kitchen Minder/PC Minder software](#)
5. Download and run the install KMSS package and click **Next** through the first four install screens, then **Install**, and then click **Finish** at the end. For upgrades, do not check the box when it asks if you want to use QES Minder. For 1st time installations, check the box.
6. Run the new version of PC Minder.
7. Validate that the correct version of PC Minder is installed by clicking Help, About on the top bar. The dialogue box that pops up should say that version 6.01.55 or higher is installed.



8. Your BOH Computer should already be connected to the “Programming Port” of the Kitchen Minder and tested during the initial installation. See your Kitchen Minder Installation guide for details.

If you can successfully send data from PCMinder to the Kitchen Minder the connection is OK and skip to # 10.

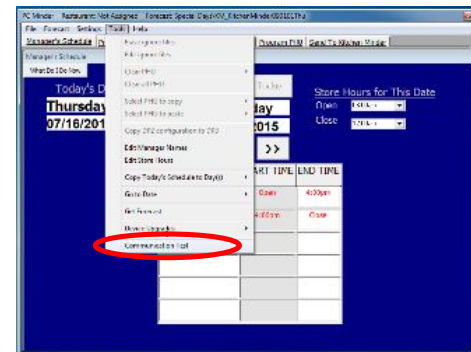
If data transmission fails go to #9.



9. Run a communications test

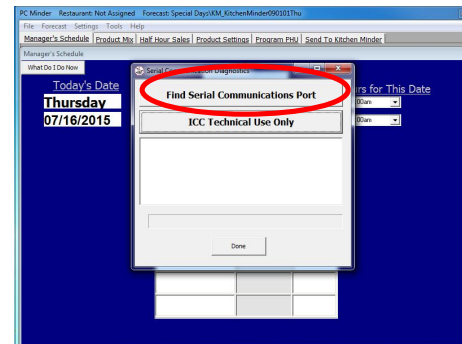
While the Kitchen Minder is on, go to PC Minder. Under the “Tools” tab, select “Communication Test”

Enter “admin” as password when prompted.



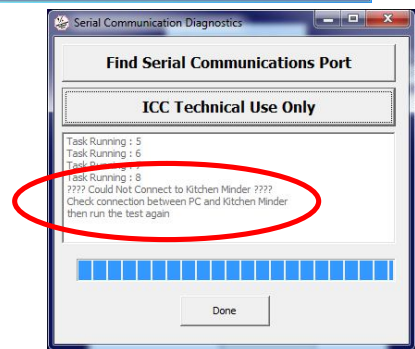
On dialogue box that pops up, select “Find Serial Communications Port”

If it finds a serial communications port, it will tell you which port it found, and you can move to step 10.



If there is no port found, it will give you an error message like the one shown on the right.

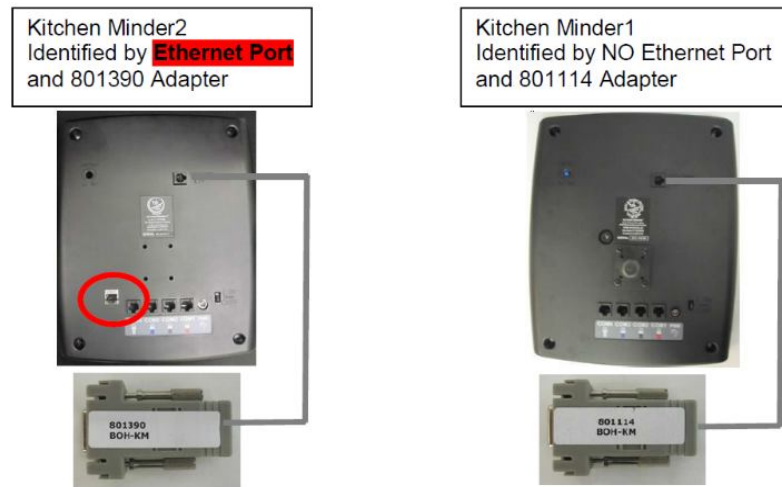
You will need to check the connections between the computer and the Kitchen Minder, COM Port assignments in Windows Device Manager and USB-Serial Drivers .Replace any suspect parts and test again.



10. Check the software version of your current Kitchen Minder unit by recycling power on the unit and observing the bottom right corner of the screen for the version number. If the version is 6.01 or higher skip to Page 5. If the version number is lower than 6.01, continue to step 11.



11. Check which Kitchen Minder unit you have (KM1 or KM2) by looking on the back of the unit.



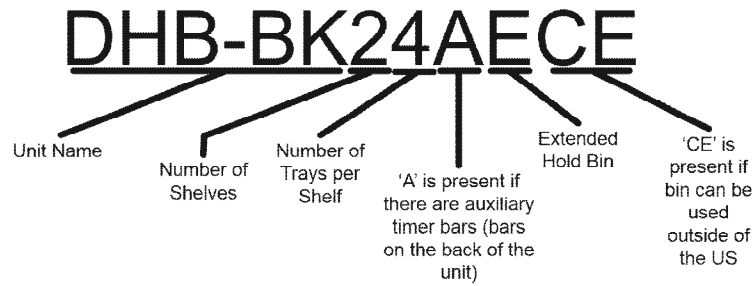
12. To upgrade the Kitchen Minder unit:

- a. Return to PCMinder on the BOH computer
- b. Go to the "Tools" menu on the top ribbon and scroll over "Device Upgrades" and select Kitchen Minder 1 or Kitchen Minder 2 depending on which unit you have.
- c. If prompted, enter "admin" as the password and select "OK"
- d. When the dialogue box appears showing that you have an upgrade, select the "Reprogram" button
- e. Power the Kitchen Minder unit off, WAIT 10 seconds, and then turn it back on, then select "Continue" on-screen.
- f. As progress is displayed, DO NOT use the computer or Kitchen Minder during the 5-10 minutes of the upgrade process.
- g. When "Programming Complete" is shown, select the "OK" button. If this upgrade fails, repeat steps a-f. If still unsuccessful, call ICC Tech Support.
- h. Repeat step 10 before proceeding, in order to verify correct software version on Kitchen Minder.

Connecting and configuring Prince Castle Translator II Kits to the Kitchen Minder

Identifying the different model types or your new Prince Castle Gen2 PHU's

Model identification#:



DHB-BK24E
1 Button Bar Channel



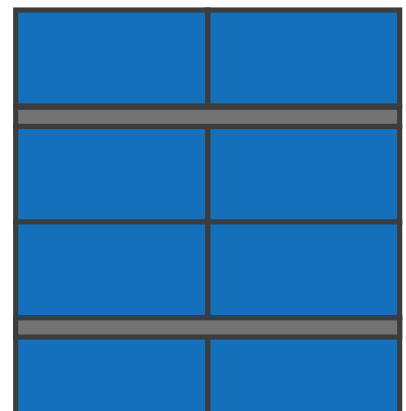
DHB-BK34E
2 Button Bar Channels



DHB-BK23E
1 Button Bar Channel



DHB-BK22E
1 Button Bar Channel



DHB-BK42E
2 Button Bar Channels



DHB-BK32E
2 Button Bar Channels

- Place new Prince Castle Gen II Holding Bins on a flat surface in the location in the kitchen designated by the store manager.

Bins may be stacked up to (4) *shelves* high, BUT ensure that all employees can reach product on the top shelf.

IMPORTANT: To prevent injury, team-lift the bins

- Connect black power cable from the back of each holding bin to a matching grounded plug. Power unit on with green switch on front.

- Determine Bin Configuration(s) to be used.

A total of (3) button bar channels can be grouped together to comprise a configuration. All possible configurations are listed in the figure below. Notice that it does not matter which bin is the 'First Bin', all possible orders are listed. Please choose the configurations based on the physical grouping of bins in the store, then minimize the number of configurations used, you cannot exceed (3)

Bin Name	Size	Button Bars
DHB-BK22E	2x2	1
DHB-BK23E	2x3	1
DHB-BK24E	2x4	1
DHB-BK32E	3x2	2
DHB-BK34E	3x4	2
DHB-BK42E	4x2	2

POSSIBLE BIN CONFIGURATIONS			
CONFIGURATION ID	NUMBER OF BUTTON BARS ON:		
	FIRST BIN	SECOND BIN	THIRD BIN
A	1		
B	1	1	
C	1	1	1
D	1	2	
E	2		
F	2	1	



Part# 990198-1

Part# 990198-1

Prince Castle Translator II Kit - \$219

includes:

980198, Prince Castle Translator II Box

681-6x6-12#: 1ft. (30 cm) Data Cable

681-6x6-96#: 8ft (2.4m) Data Cable

681-6x6-168#: 14ft. (4.3m) Data Cable

681-8x8-600#: 50ft. (12.2m) CAT5 Cable

660000, Cable Ties (2)

Qty-1 Prince Castle Translator II Box with the appropriate cables is required for each configuration A-F for maximum of 3 connected to the Kitchen Minder Ports 1-3

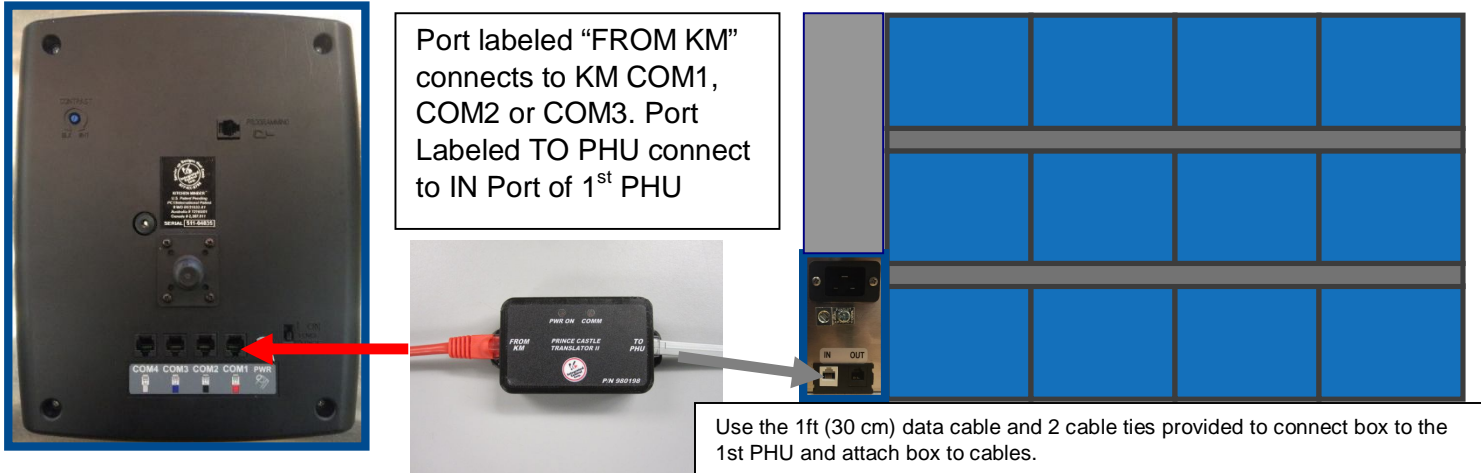
NOTE: Use ONLY ICC data cables for PC II Box & PHU interconnections. These are 6 conductor Pin1-Pin1 cables.

4. Connect Kitchen Minder to Prince Castle Translator II Box (PC II Box)

You will need (1) PC II Box and Ethernet cable for each configuration chosen (max. 3 boxes). Connect one end of the Ethernet cable into the Kitchen Minder port (1-3) and the other end into the FROM KM port on the PC II Box.

NOTE: Verify that the black box says “PRINCE CASTLE TRANSLATOR II P/N 980198” on the label of the box. If not, get a new box from Prince Castle or your service agency before proceeding.

Repeat this for up to (3) configurations using the COM1, COM2, and COM3 ports on the Kitchen Minder in order.



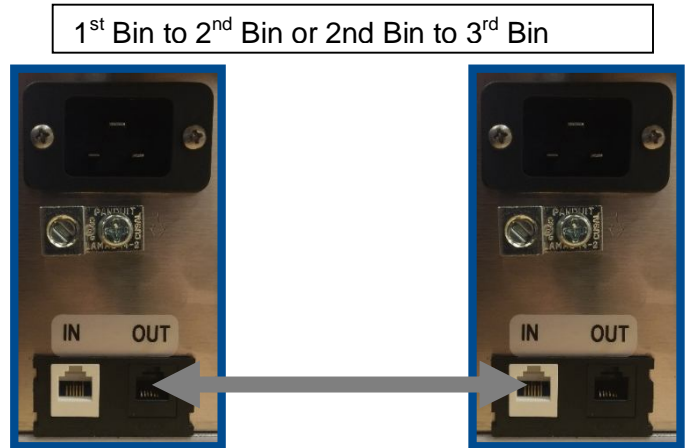
NOTE: All cables are intended to be permanent, DO NOT remove or disconnect cables and do not move bins which may compromise the cable/connections.

5. Connect to First PHU

Connect an ICC data cable from the TO PHU port on the PC II Box to the IN port of the First PHU in each configuration.

Connect multiple bins together:

If you are using a configuration that uses multiple bins, you will need to connect them. This is done by connecting an ICC data cable from the OUT (black) port of the First Bin to the IN (white) port of the Second Bin. If 3 bins are in the configuration, you will *also* need to connect an ICC data cable between the OUT port of the Second Bin to the IN port of the Third Bin



Use only ICC cables to connect PHU's, 50' max.:

- Part No. 681-6x6-96#, 8ft. (2.4m) Data Cable
- Part No. 681-6x6-168#, 14ft. (4.3m) Data Cable
- Part No. 681-6x6-600#, 50ft. (12.2m) Data Cable (optional ordered separately)

6. Set Bin Addresses

To allow the Kitchen Minder to properly communicate with the bins, bin addresses need to be correctly set as shown in the table below.

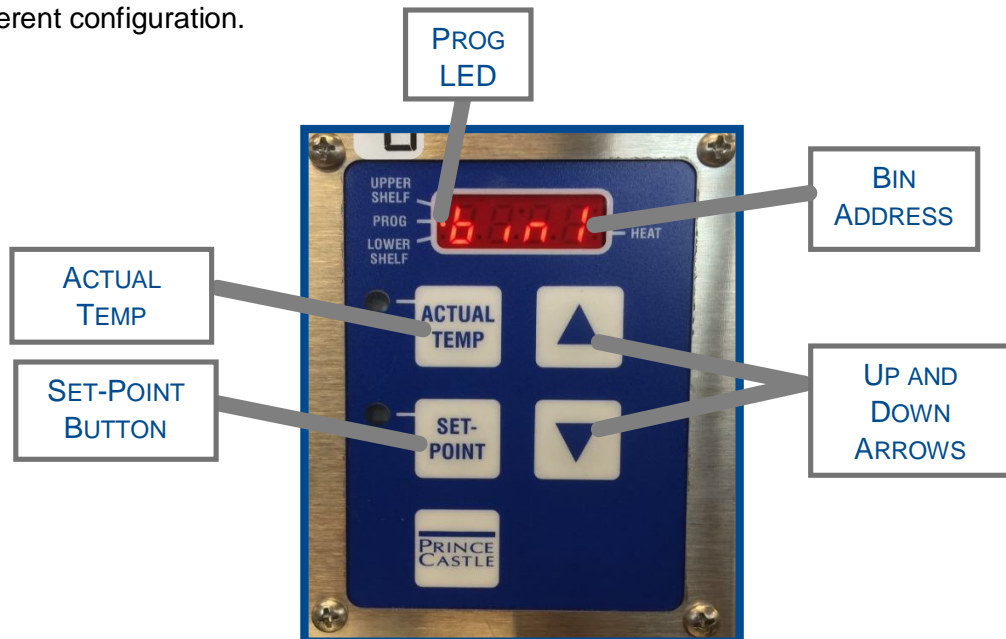
Configuration	First Bin		Second Bin		Third Bin	
	Bin Address	Bar Address(es)	Bin Address	Bar Address(es)	Bin Address	Bar Address(es)
A	BIN 2	BAR 2				
B	BIN 2	BAR 2	BIN 3	BAR 3		
C	BIN 2	BAR 2	BIN 3	BAR 3	BIN 4	BAR 4
D	BIN 2	BAR 2	BIN 3	BAR 4 BAR 3		
E	BIN 2	BAR 3 BAR 2				
F	BIN 2	BAR 3 BAR 2	BIN 4	BAR 4		

This is done using the control panel on the front of the PHU. First, check what the current Bin Address is by pressing and holding the ACTUAL TEMP and SET-POINT buttons at the same time until the Bin Address is shown on the display. If the correct Bin Address is shown, proceed to step 10.

To change an incorrect Bin Address, first power off the unit. After waiting 5 seconds, power it back on and immediately hold the ACTUAL TEMP and SET-POINT buttons until the small PROG LED lights up. After it is lit, release the two buttons and scroll using the up and down arrows until the desired Bin Address is displayed. Then press the Prince Castle logo button to confirm.

Complete this process on each bin until all Bin Addresses are correct.

The numbering of one configuration has NO impact on the numbering of a different configuration.



7. Set Bar Addresses

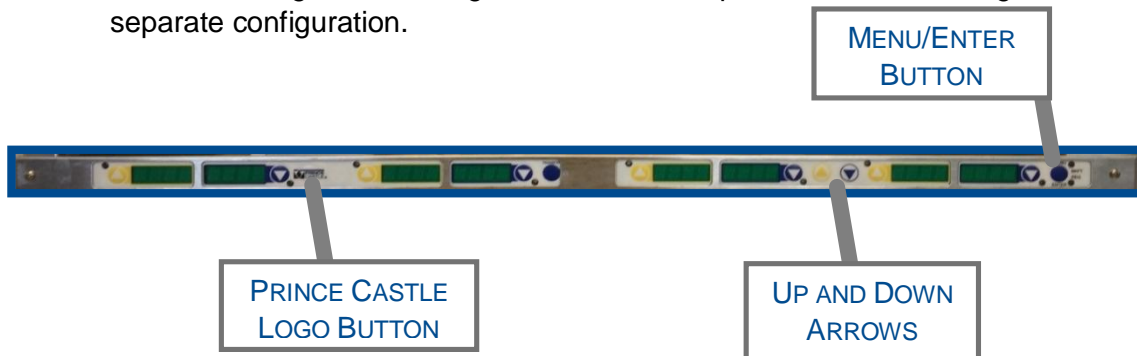
To allow the bin to properly communicate with the timer bar(s), bar addresses need to be correctly set as shown in the table above. This is done directly on the timer bar. First, check what the current Bar Address is by pressing and holding the Prince Castle logo button and the down arrow button until the Bar Address is shown on the far right screen of the button bar.

To change an incorrect Bar Address, first power off the unit. After waiting 5 seconds, power it back on and immediately hold the Prince Castle logo button and the down arrow button until the address number starts blinking. Release the two buttons and scroll using the up and down arrows until the desired Bar Address is displayed. Then press the MENU/ENTER button to confirm.

Complete this for each button bar channel on all of the bins. Remember that button bars on the back of a unit are considered auxiliary and do not need to be separately programmed. These bars follow the programming of the bar on the front side of the same shelf.

Be sure to follow the numbering system as prescribed in the table. In the table, if two Bar Addresses are stacked on each other, this reflects the way the bars are oriented on the unit (i.e. the bar on the bottom in the table represents the bar on bottom on the unit).

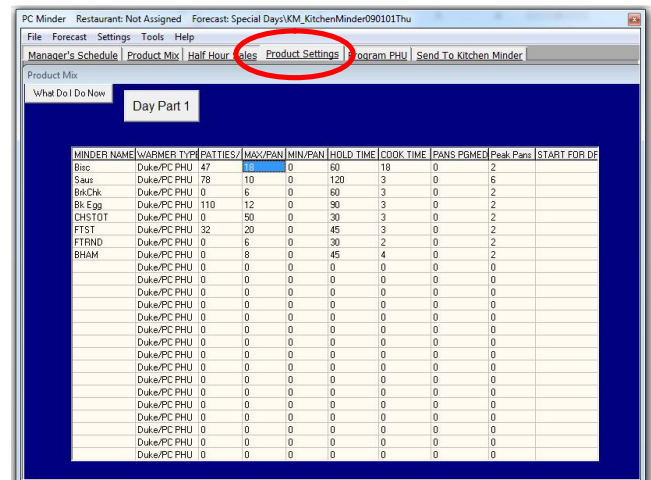
The numbering of one configuration has NO impact on the numbering of a separate configuration.



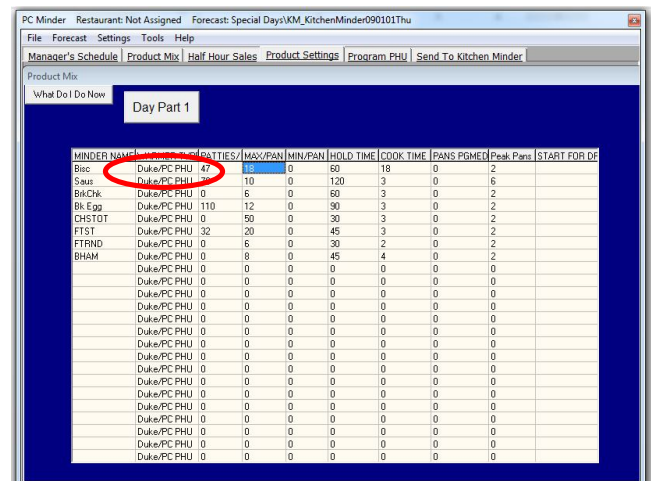
Setting up PC Minder for Daily Use

1. In PC Minder on the BOH computer, Load Product Profiles for all products to be used

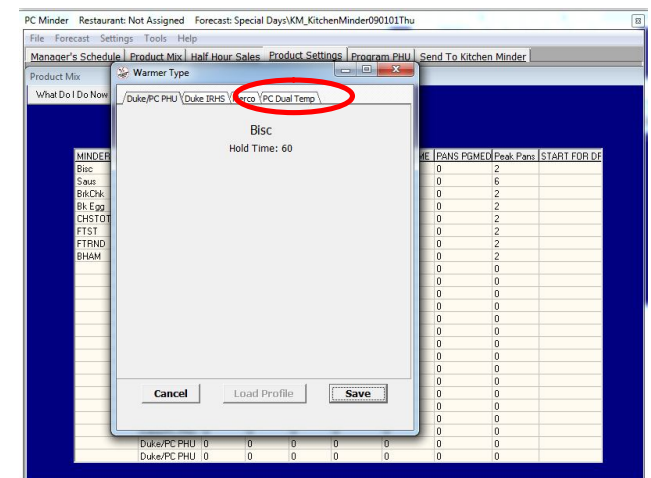
- a. Navigate to the "Product Settings" screen



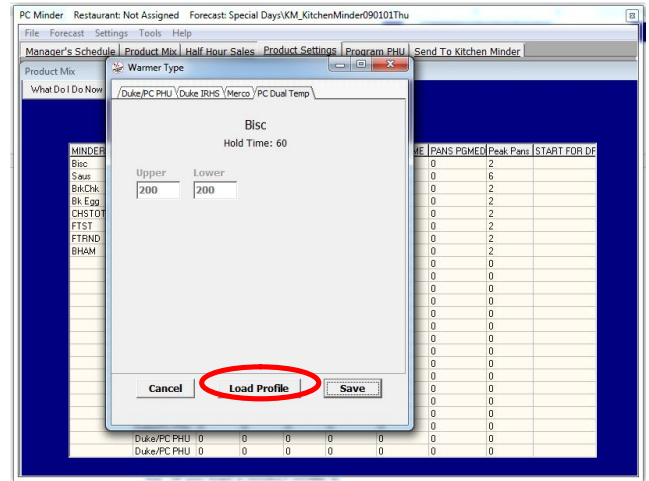
- b. To load the profile for each product, double-click in the "Warmer Type" column for the product.



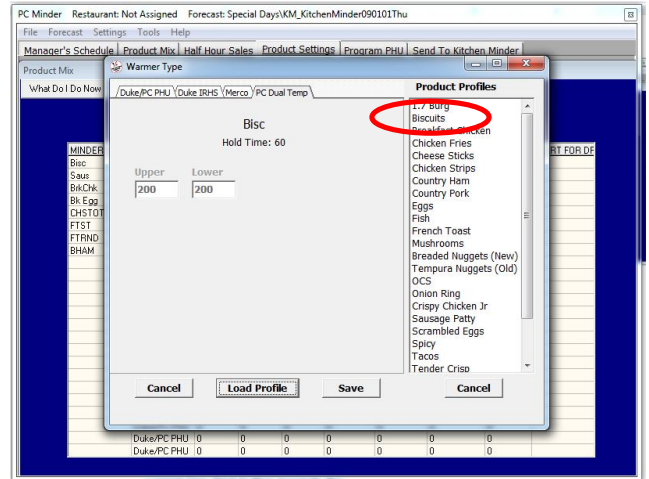
- c. After the "Warmer Type" dialogue box pops up, click on the "PC Dual Temp" tab along the top.



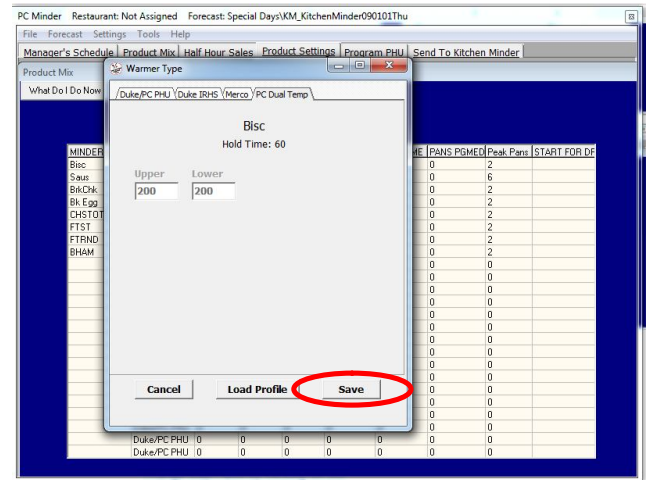
- d. Select "Load Profile" from the buttons along the bottom.



- e. Find the product you are programing in the menu that pops out and click on it. Match the abbreviation shown to the product profile that you load.

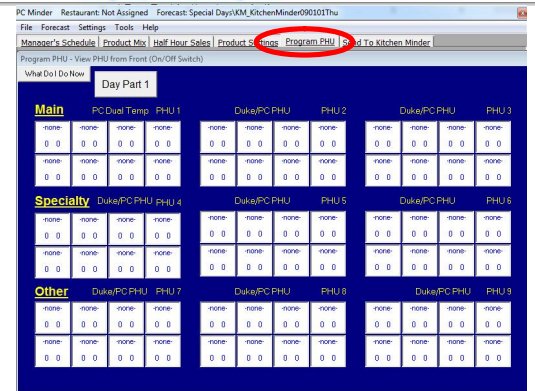


- f. When the menu pops back in, select "Save"
- g. Repeat b-f for all products you use in your store for all Day Parts. You can change Day Parts by clicking on the current Day Part button towards the top. (If you load a product profile in one Day Part, you do not need to load it again in another Day Part)



2. Program the Holding Bins for Kitchen use

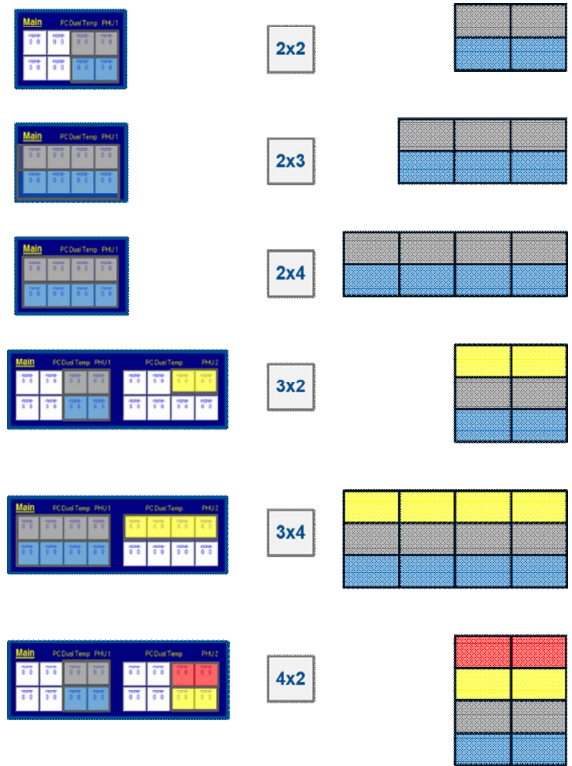
- a. Navigate to the "Program PHU" screen



- b. Determine how your bin configuration relates to PC Minder.

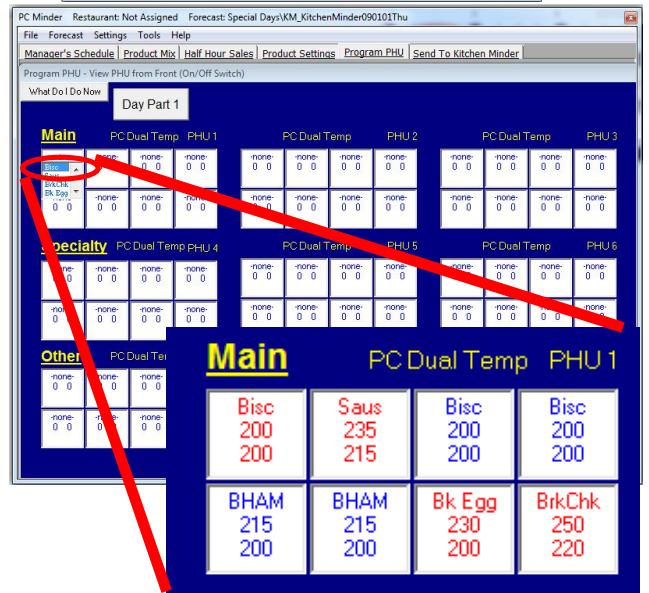
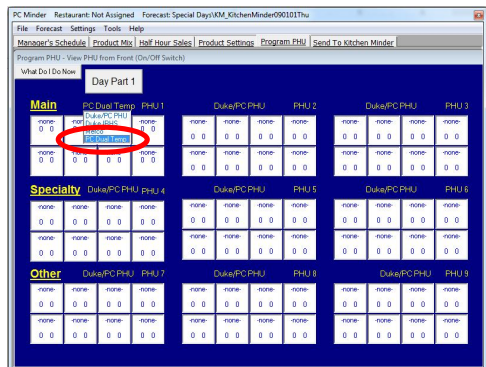
For each configuration you chose in the setup, you will need to use one row in PC Minder, so start each new configuration in a new row starting from the top. Each row represents a COM port on the Kitchen Minder (top row is COM1, middle is COM2, and bottom is COM3).

The colors in the figure to the right show which trays correspond with which boxes on PC Minder. Notice that some bins require you to use multiple sections of boxes on PC Minder, you MUST start each bin in its own section (e.g. if a bin uses the a whole section and the top of a second one, the next bin should go in the third section). Do not place products in the boxes that are not shaded.

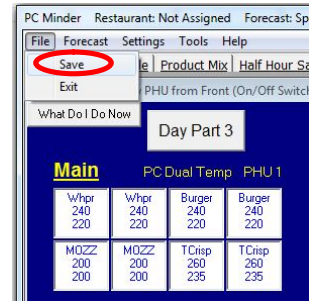


** On a 2x3 unit, you must put products in all four slots across in order to communicate properly with PC Minder. The products in the two bottom right shelves must match and the products on the two top right shelves must match.**

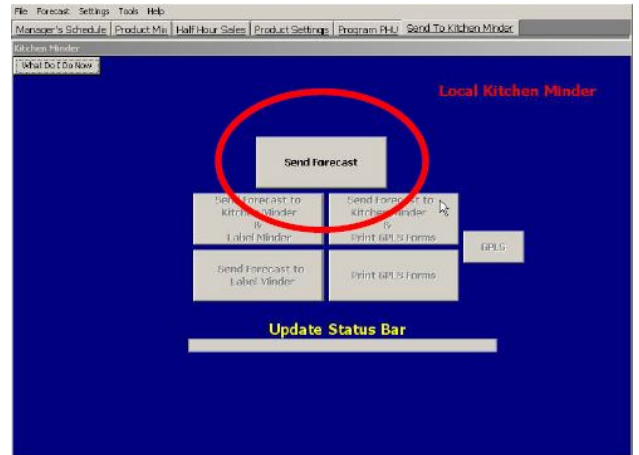
- c. Change *each section* you will use to “PC Dual Temp” from “Duke/ PC PHU” by clicking on “Duke/ PC PHU” then selecting “PC Dual Temp”.
- d. Based on which configurations you used in setup, choose products to be held in the bins. Do this by clicking anywhere in a white box and selecting the product from the dropdown menu. (NOTE: each half of each row in a section must match, if they do not, they will display in red. Acceptable pairings will show in blue) If you do not want to use a tray, you may select “-none-”.
- e. Select a product or “-none” for each tray on all of the bins for each Day Part.



- f. Save programming by selecting File>Save on the top ribbon.



- g. Send Programming to Kitchen Minder by navigating to “Send to Kitchen Minder” Screen and selecting “Send Forecast”. Wait for the process is complete, it will take about 5 minutes. You should hear beeping on the Kitchen Minder unit to validate that it is sending data.



- h. Go to bins and verify that all bars display the correct products in the correct locations, if not, check through your settings in step d and e and then repeat step g if necessary.
- i. Check that the temperature setpoint for each Zone match what was programmed in PCMinder, , if not, check through your settings in step d and e and then repeat step g if necessary